

Validation of Our Lived Experiences Through Field Experience

Karen Canales Salas, Little Village Environmental Justice
Organization (LVEJO)

Shared Air/Shared Action, EPA funded

Partnership with :

- 4 community organizations in Chicago, 3 EJ Orgs *
 - Little Village Environmental Justice Organization (LVEJO) *
 - People for Community Recovery (PCR)*
 - Southeast Environmental Task Force (SETF)*
 - Alliance for Greener South Loop (AGSL)
- 2 non-profits
 - Delta Institutes
 - Respiratory Health Association (RHA)
- 2 University Partners
 - University of Illinois at Chicago (UIC)
 - University of Memphis (UofM)

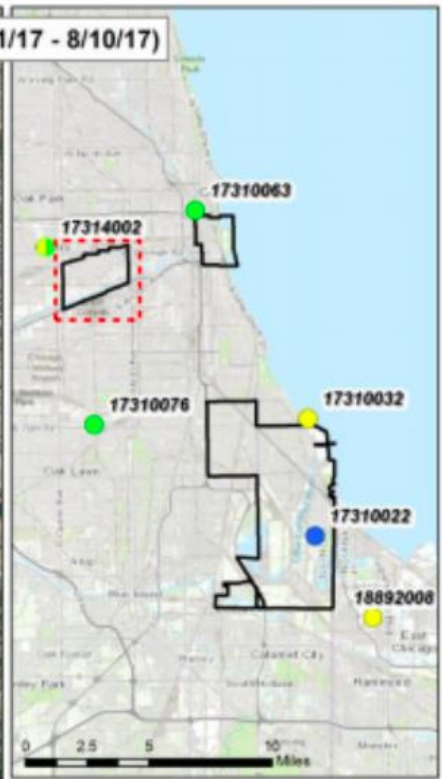
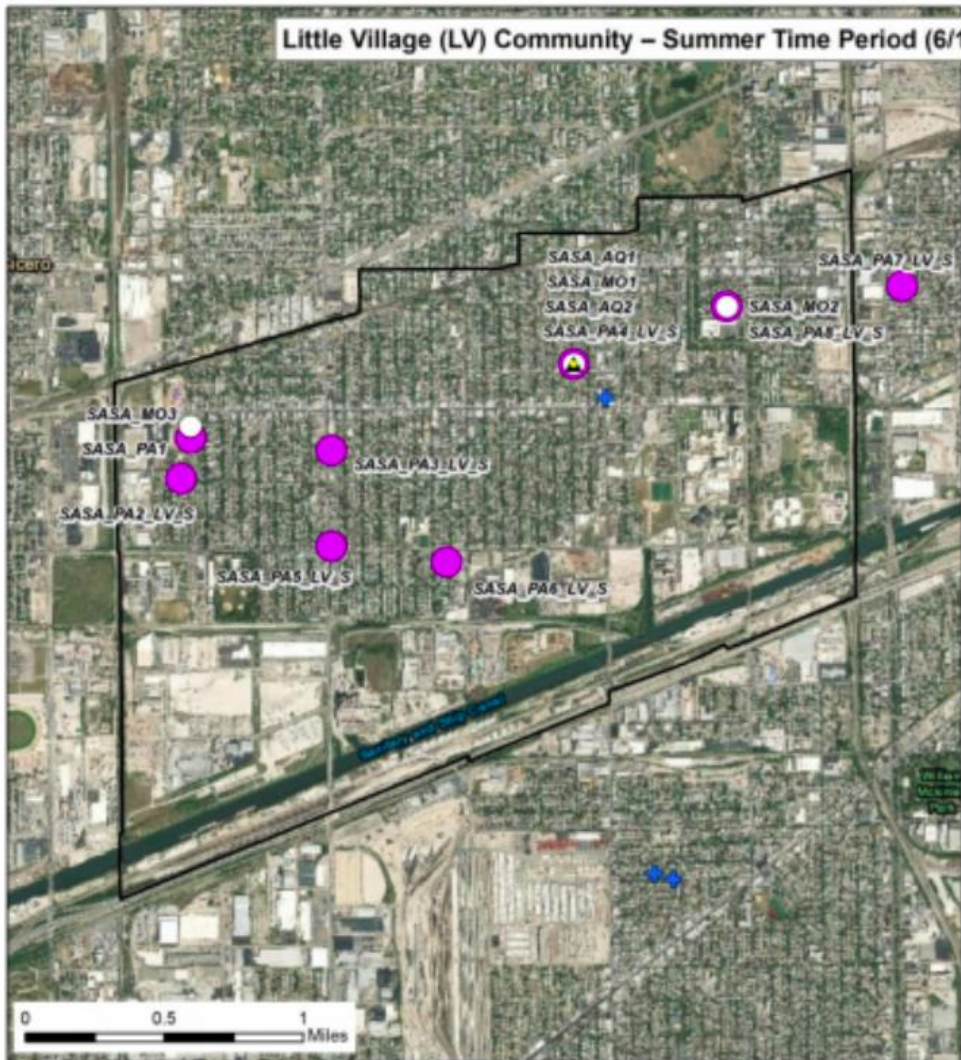
Shared Air/Shared Action

- LVEJO - advocate for policy changes to the zoning ordinances and for green development
- PCR - build awareness air quality and any potential threats
- SETF - create awareness of local air quality threats and build connections with bordering neighborhoods
- AGSL - connect with other environmental organizations and learn about own air quality

The project

- As a community that is in one of Chicago's Industrial Corridors, we've had been negatively impacted by the industry and pollution.
- We fought to shut down the Fisk and Crawford generating stations in 2012.
 - Emissions from these plants were linked to 2800 asthma attacks/year, 550 emergency room visits/year, and 42 premature deaths/year.
- Give community residents the power to do science because they knew there was a problem with their air.
 - Using low-cost sensors that are user-friendly; Air Beams, PurpleAirs, Aeroquals, Terrier

Little Village (LV) Community – Summer Time Period (6/1/17 - 8/10/17)



- Legend**
- + Meteorology Monitoring Site
 - Monitoring Locations (Aug 1 File)
 - Instrument Type
 - Aerosol - NO₂
 - ▲ Aerosol O₃
 - MetOne
 - PurpleAir
 - Fixed Monitor Locations
 - Pollutant
 - NO₂
 - O₃
 - O₃ and NO₂
 - O₃ and PM_{2.5}
 - PM₁₀
 - Little Village Boundary



Schools in the Pulaski Ave. Corridor

26th St. and Kostner Ave.
Average # of trucks is 1.3 every minute;
19.54 every 15 minutes

31st St. and Kostner Ave.
Average # of trucks is 1.05 every minute
between 4pm - 5pm

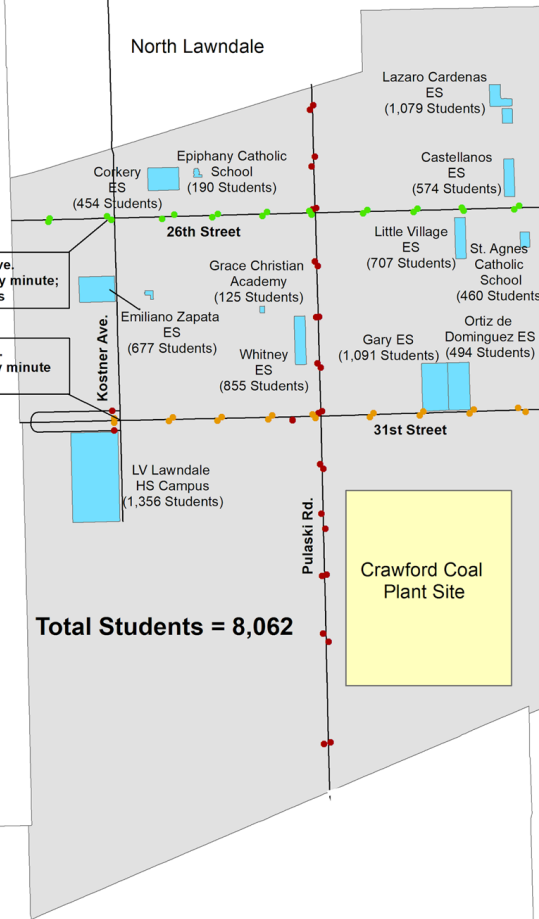
- #53/53A Bus Stops
- #60 Bus Stops
- #35 31st/35th Bus Stops
- School Properties
- South Lawndale Community Area



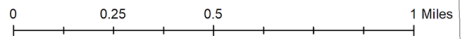
Map Created by
Jose Acosta
LVEJO

Garfield Ridge

North Lawndale



Archer Heights







Unilever



SHIPPING
and
RECEIVING

445



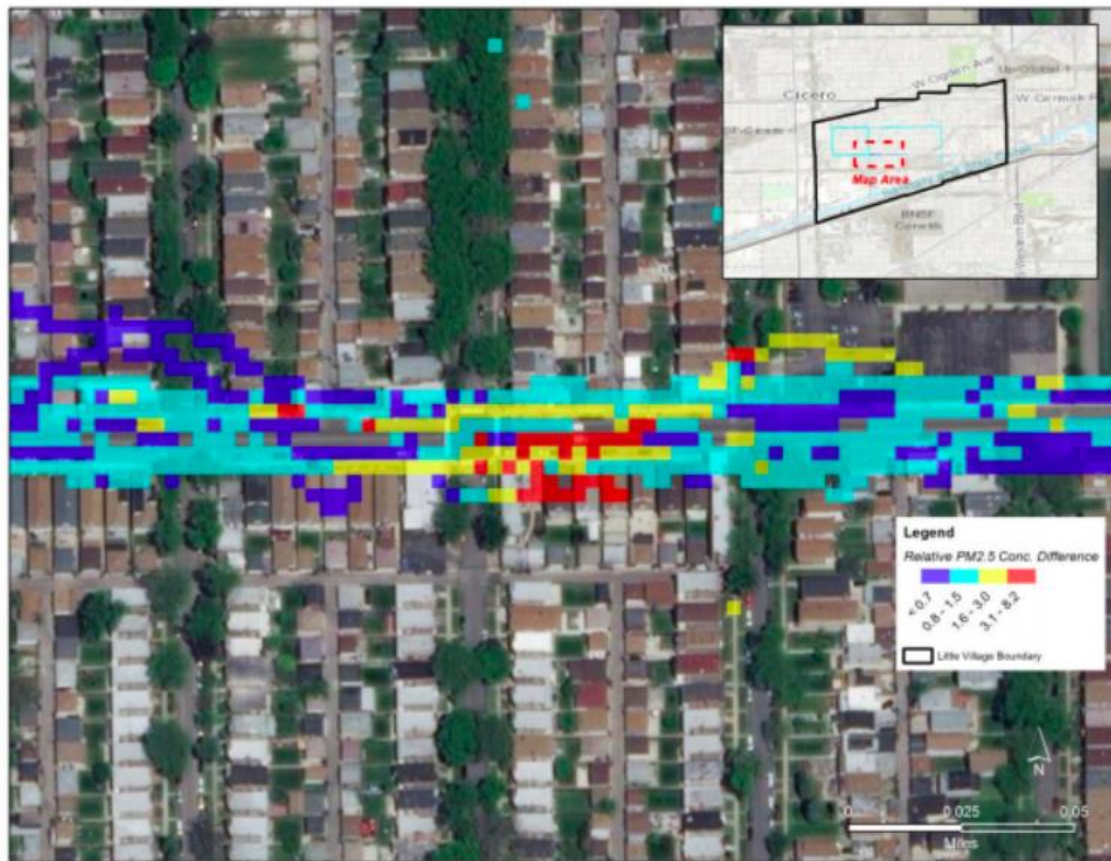



Figure 7. Relative increase or decrease in $PM_{2.5}$ concentrations throughout the area based on the AirBeam data collected; dark and light blue areas indicate concentrations were typically at or below average, while the yellow and red areas indicate concentrations were typically above average. This figure highlights a hotspot area along W 31st St between S Avers Avenue and S Hamlin Avenue.

Sh

statistics/*Estadísticas de Tráfico de Camion*

Trucks pass by Kostner
15 minutes.
the intersection



the trucks go East
Little Village



Empowerment Through Data and Experience

- We are now able to testify at hearings for proposed developments
- Continuing to demand healthier conditions and less air pollution because of the data
- Mobilize people to collect more data on air, traffic, and health