



Kansas City TRansportation and local-scale Air Quality Study (KC-TRAQS): Examining Local Air Quality with a Network of Low-cost Sensors

Stephen Neil Feinberg, PhD

Oak Ridge Institute for Science and Education (ORISE)

research appointment at EPA Office of Research and Development

*Air Sensors International Conference, Oakland, CA
September 14, 2018*

KC-TRAQS Team

Sue Kimbrough, ORD Lead

Stephen Krabbe, R7 Lead

Richard Baldauf,

NRMRL/OTAQ

Rachelle Duvall, NRMRL

Mike Hays, NRMRL

Pam Barfield, NRMRL

Bill Mitchell, NRMRL

Bob Wright, NRMRL

Richard Snow, NRMRL

James Faircloth, NRMRL

Chad Bailey, OTAQ

Carry Croghan, NERL

Tim Barzyk, NERL

Vlad Isakov, NERL

Mike Davis, R7

Matt Brown, R7

Cody Brown, R7

Amy Shields, R7

Amy Bhesania, R7

Amy Algoe-Eakin, R7

Andy Hawkins, R7

Summary

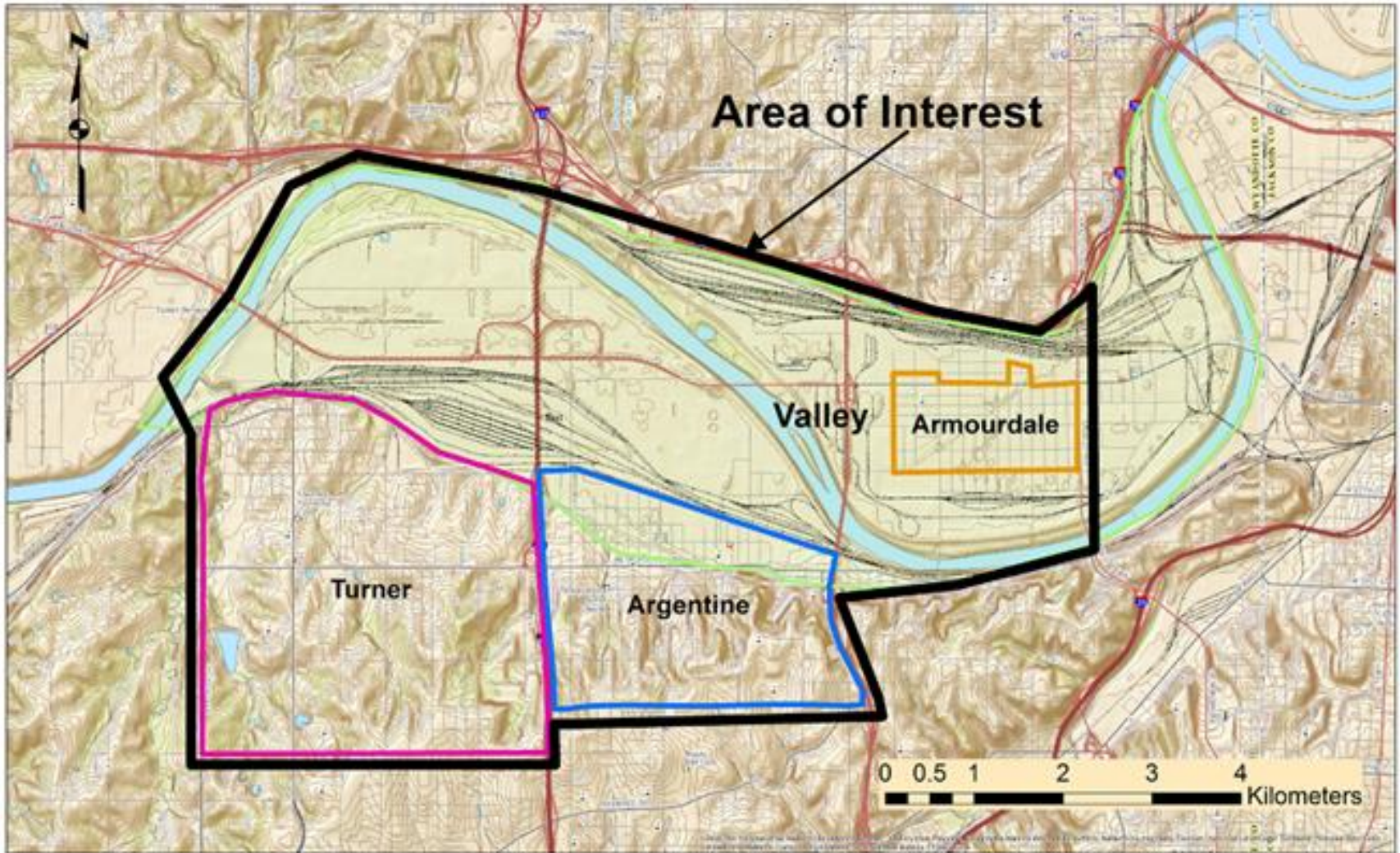
- Pollutants of Interest: **PM_{2.5}**, BC, EC/OC
 - Other parameters: wind speed (WS), wind direction (WD), temperature, relative humidity (RH), barometric pressure
- Project started mid-Oct 2017
- Planned completion Oct 31, 2018
- End-of-study collocation 1st week Nov 2018
- **Fixed Site Measurements ongoing**
- Geospatial Measurement of Air Pollution (GMAP; mobile measurement intensives)
 - Fall intensive completed Oct/Nov 2017
 - Spring intensive completed Feb/Mar 2018
- AirMapper (citizen science ongoing)
- Plan to deploy additional lower-cost sensors
Summer – Fall 2018 (evaluate new technologies)



AirMapper -- an integrated portable sensor unit that includes an OPC-N2 particle sensor (measuring PM₁, PM_{2.5}, PM₁₀), CO₂ sensor, GPS, accelerometer, noise sensor, temperature and humidity sensor.



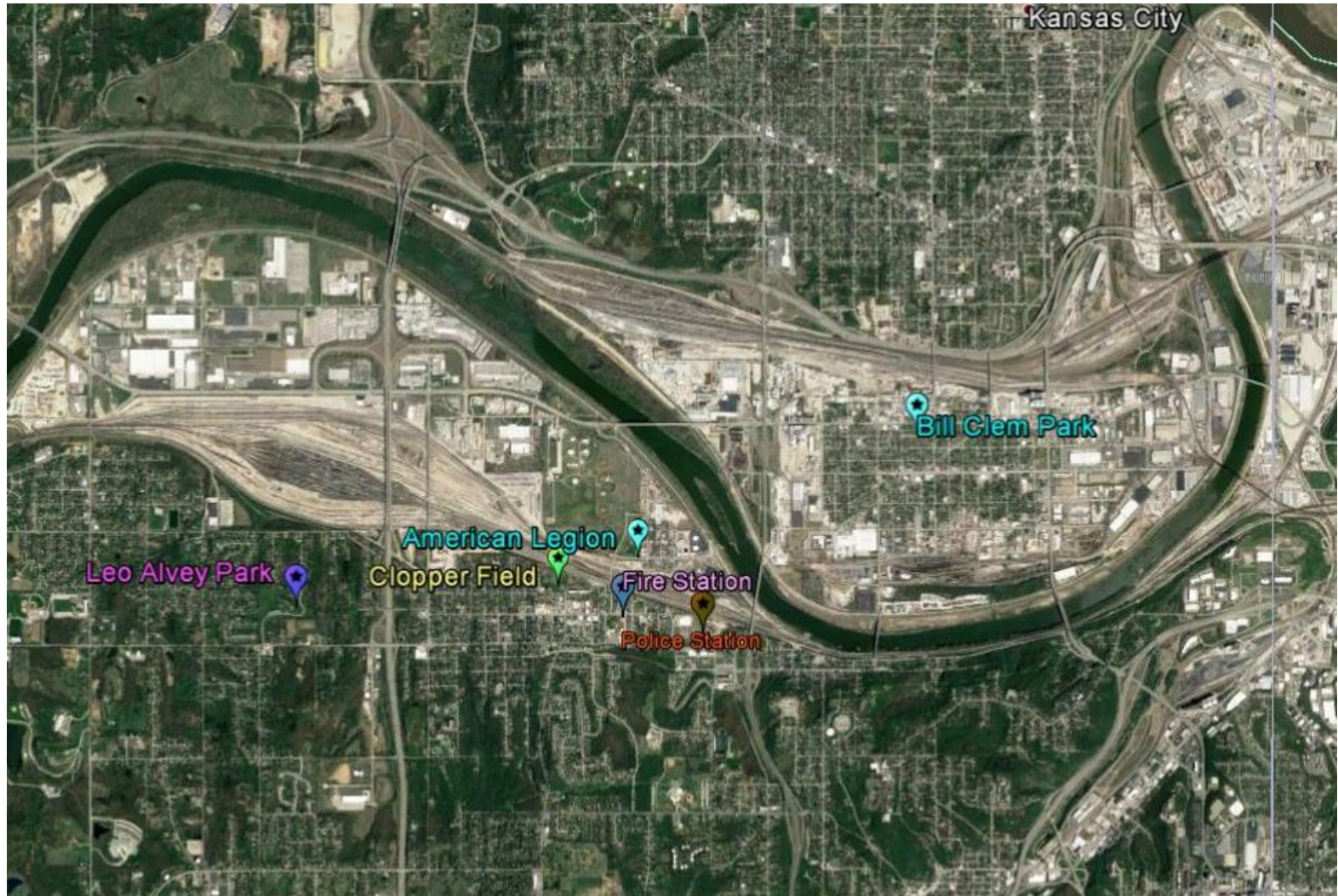
Study Area



Science Questions & Drivers

- **What is the spatial and temporal extent of local air pollution sources in and around the Argentine (KS) neighborhood?**
- Can the impact of local air pollution sources on the Argentine and surrounding neighborhoods' air quality be identified and quantified?
 - ✓ What is the spatial and temporal variability of rail-yard air pollution impacts and other nearby sources, under different meteorological conditions and source activities?
 - ✓ Can the effectiveness of a self-driven community measurement project be quantified? What is the suitability of a sensor instrument package (e.g., AirMapper) to support real-time mapping of particulate matter by citizens?
 - ✓ What is the added value of citizen science in the research process and can this value added be quantified?
 - ✓ What is the suitability and effectiveness of modeling tools to support citizen science in the research process and can this value added be quantified?

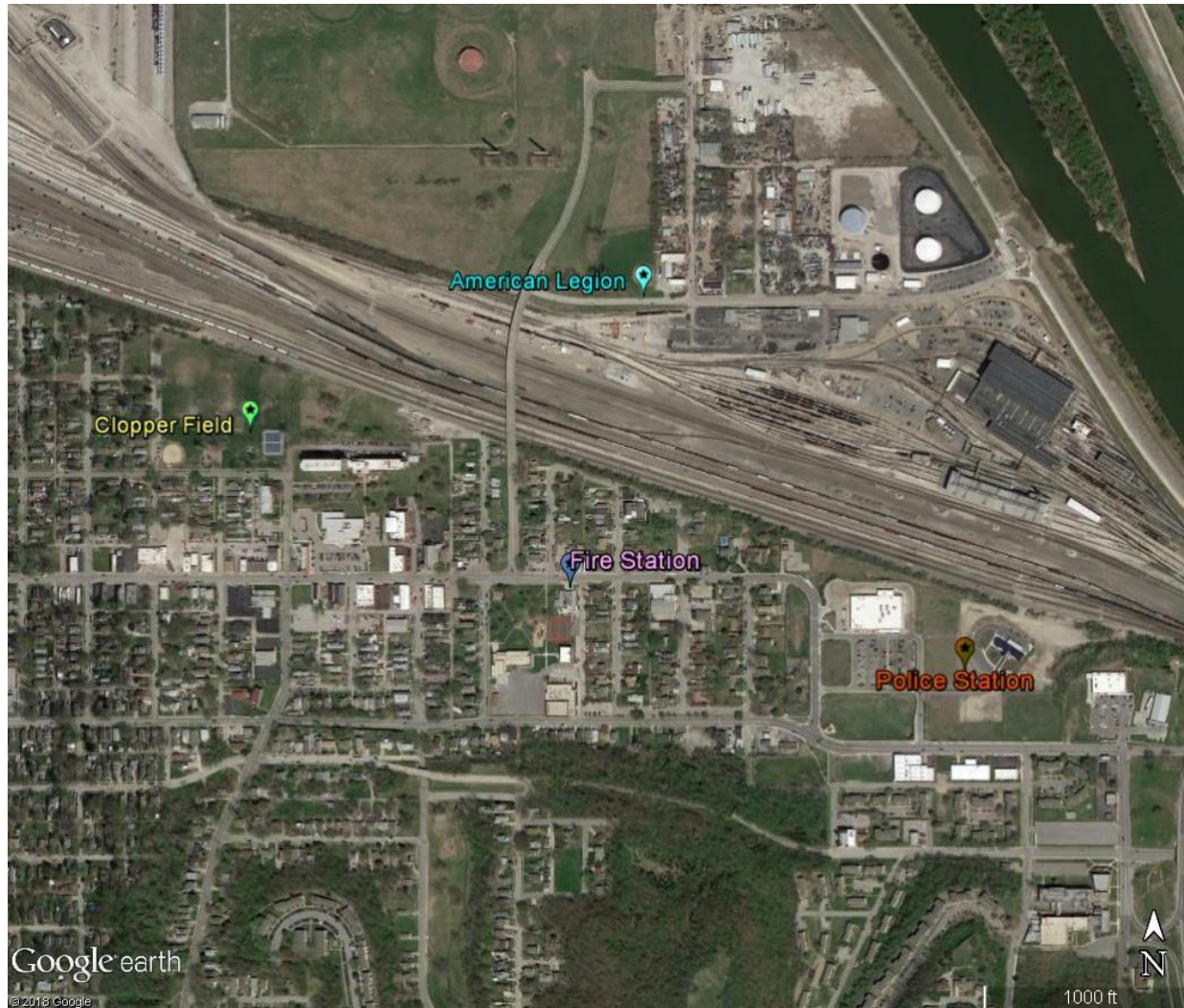
Monitoring Locations



Preliminary Data Analysis

- Focus on four Sensor Pods located near the railyard
 - $PM_{2.5}$ measured by Alphasense OPC-N2
 - WS and WD measured by RM Young 2-D Sonic Anemometer
- Data collected between October 2017 and May 2018 (approximately 300k minutes of data per pod)
- Limited Data Screening
 - Remove negative values for $PM_{2.5}$, WS, RH, Temp
 - Require 45 minutes of valid data for hourly averages
 - Require complete observations when pairing winds and $PM_{2.5}$ data
- Sensor data is “raw” – no post-processing or data transformation
- Final analysis will require more in depth QA screening and incorporation of collocation results

Focus Monitors - Argentine



American Legion



Priority Fixed Measurements

BC

PM_{2.5}

Met Data

Barometric Pressure

Relative Humidity

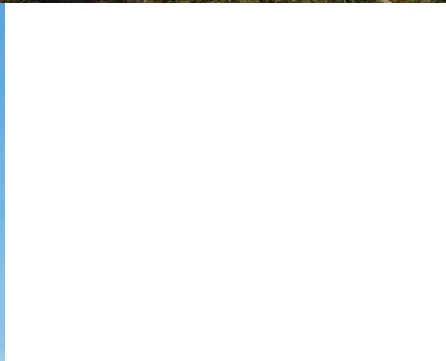
Temperature

Wind Speed

Wind Direction



Fire Station



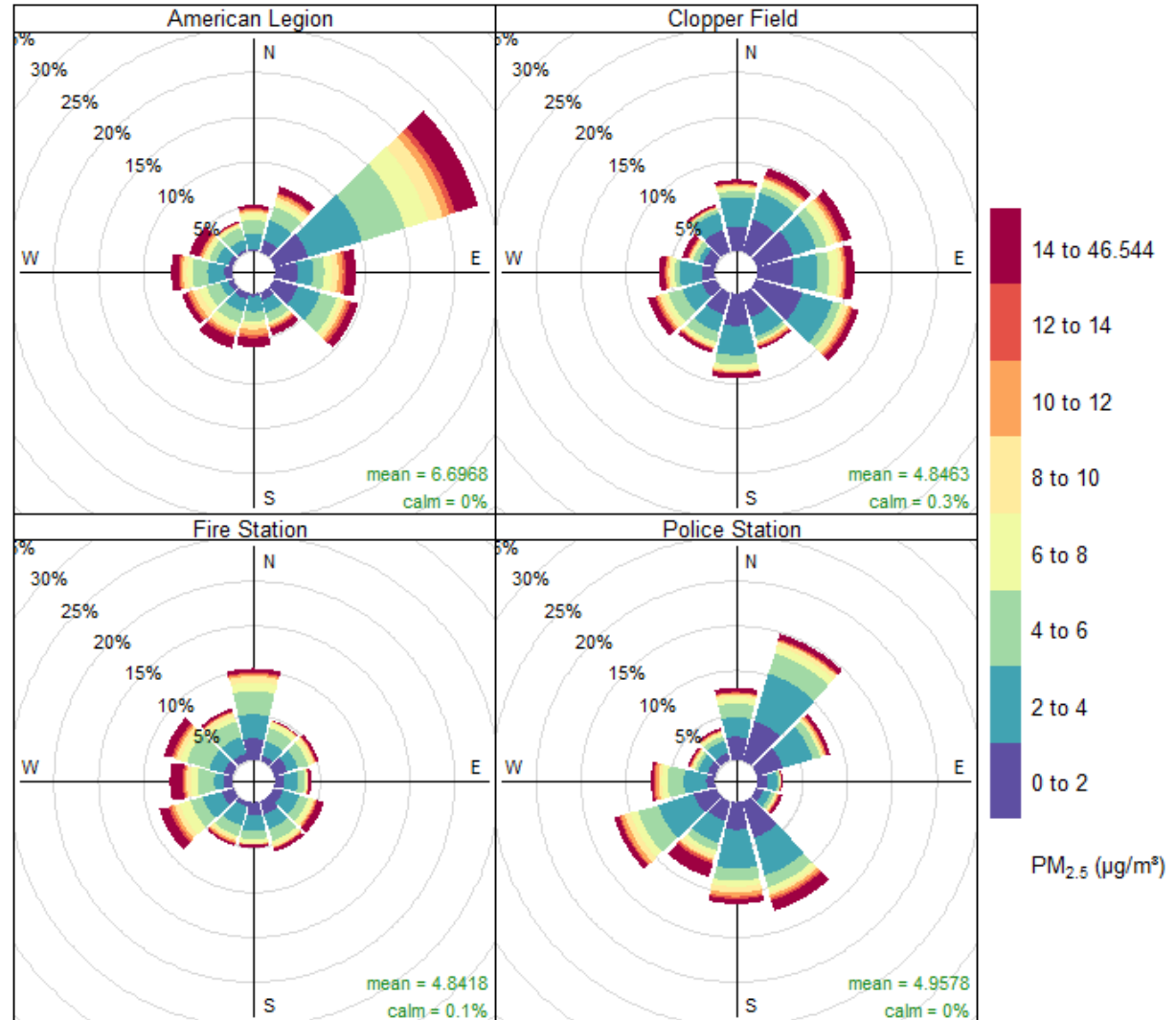
Clopper Field



Police Station

Traditional Pollution Roses

- Variability in measured winds
- Difficult to see concentration percentages within wind sectors
- Cannot combine results from different pods within the network



Frequency of counts by wind direction (%)

Nonparametric Trajectory Analysis

- The 1-minute data collected by the sensor pods allow for advanced data analysis techniques.
- One such technique is called Nonparametric Trajectory Analysis (NTA); Henry, R. C.; Vette, A.; Norris, G., *Environ. Sci. Technol.*, 2011, 45 (24), 10471-10476.).
- NTA calculates local wind back trajectories (in this case, 50 minute trajectories) with associated measured concentrations.
- The analysis then performs weighted averaging to calculate the statistically expected concentration at the monitoring site when the wind passes over a given point before reaching the monitor.

Nonparametric Trajectory Analysis

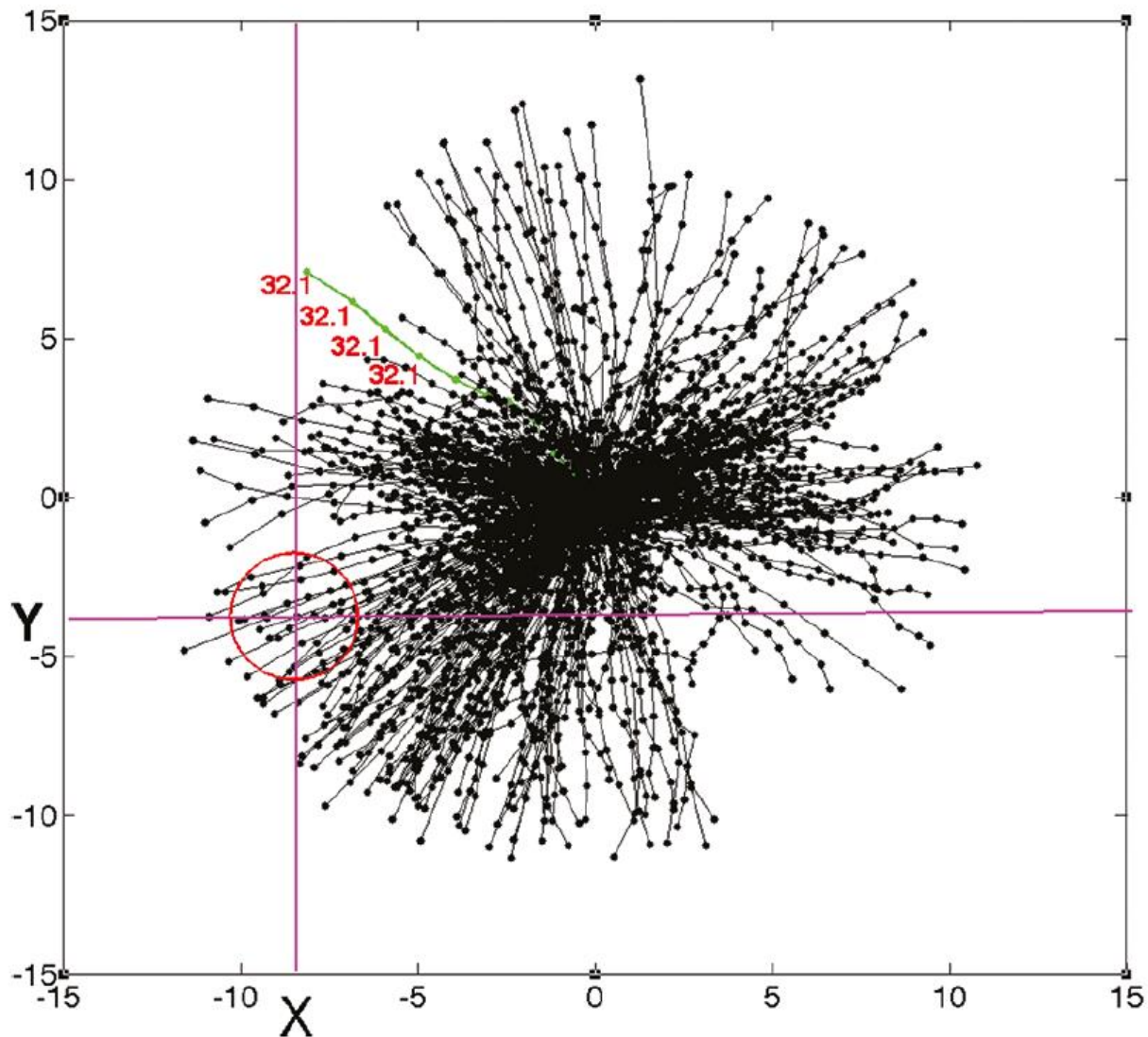
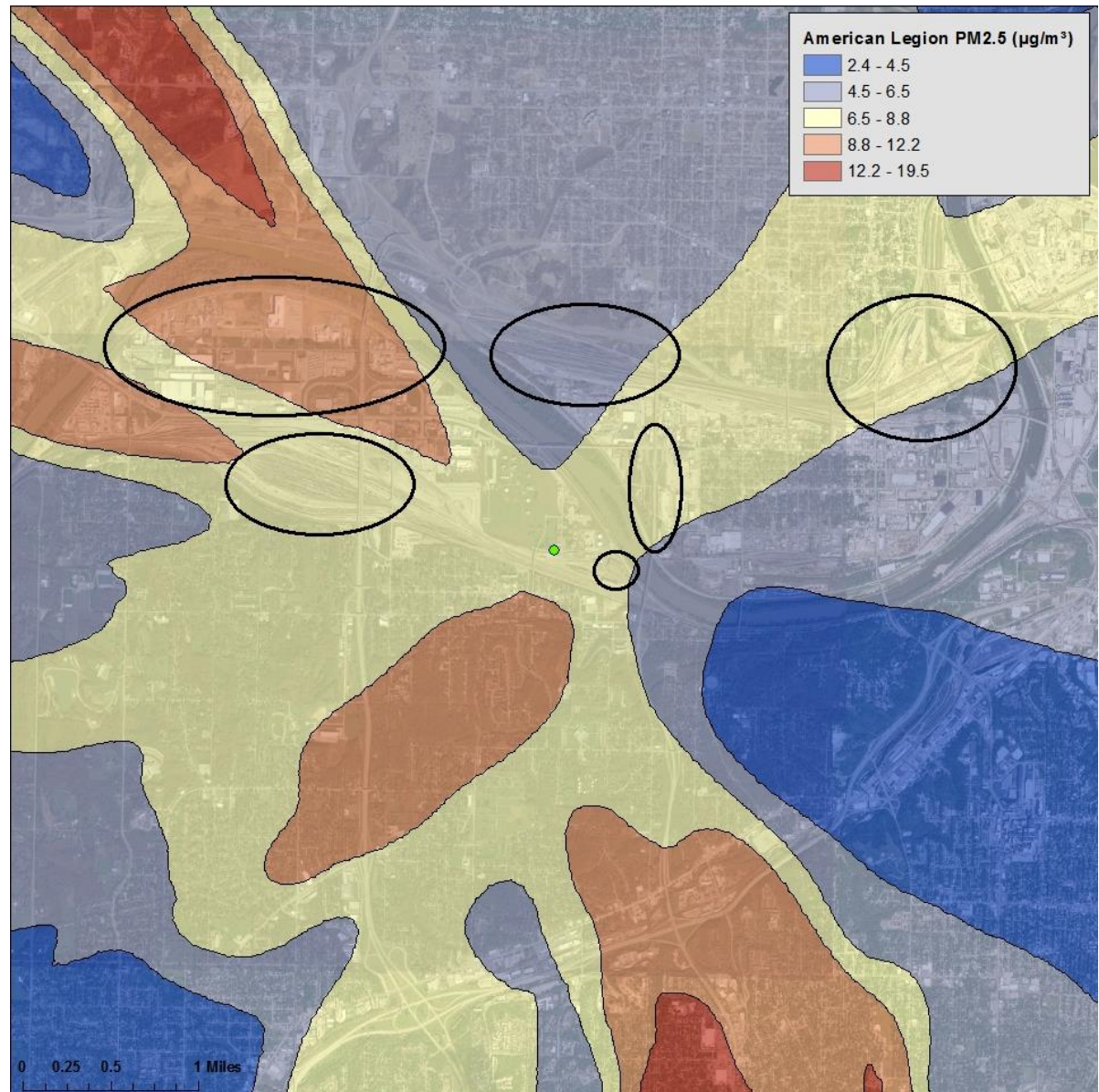


Figure from Henry, R. C.; Vette, A.; Norris, G., *Environ. Sci. Technol.*, 2011, 45 (24), 10471-10476.

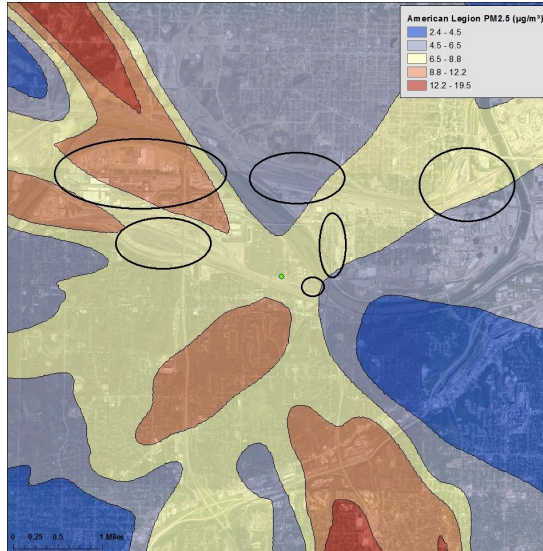
NTA Result Example – American Legion

- Area has many sources that contribute to measured PM_{2.5}
- These results do not suggest individual sources, rather locations where multiple sources are nearby

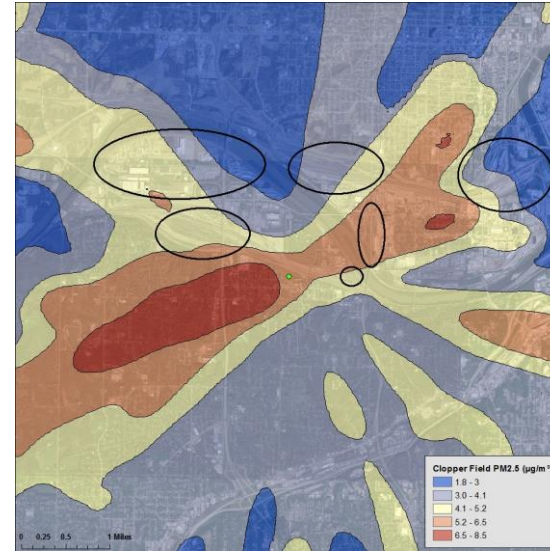


NTA Results – All Four Sites

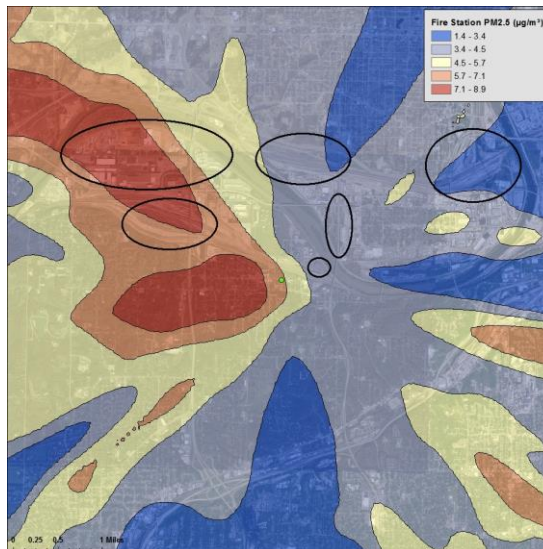
American Legion



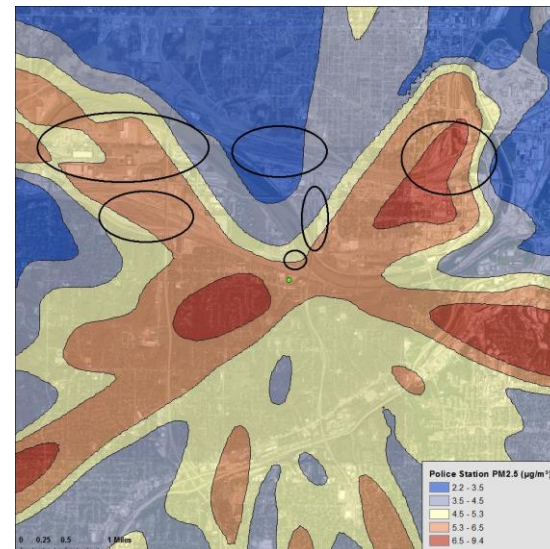
Clopper Field



Fire Station

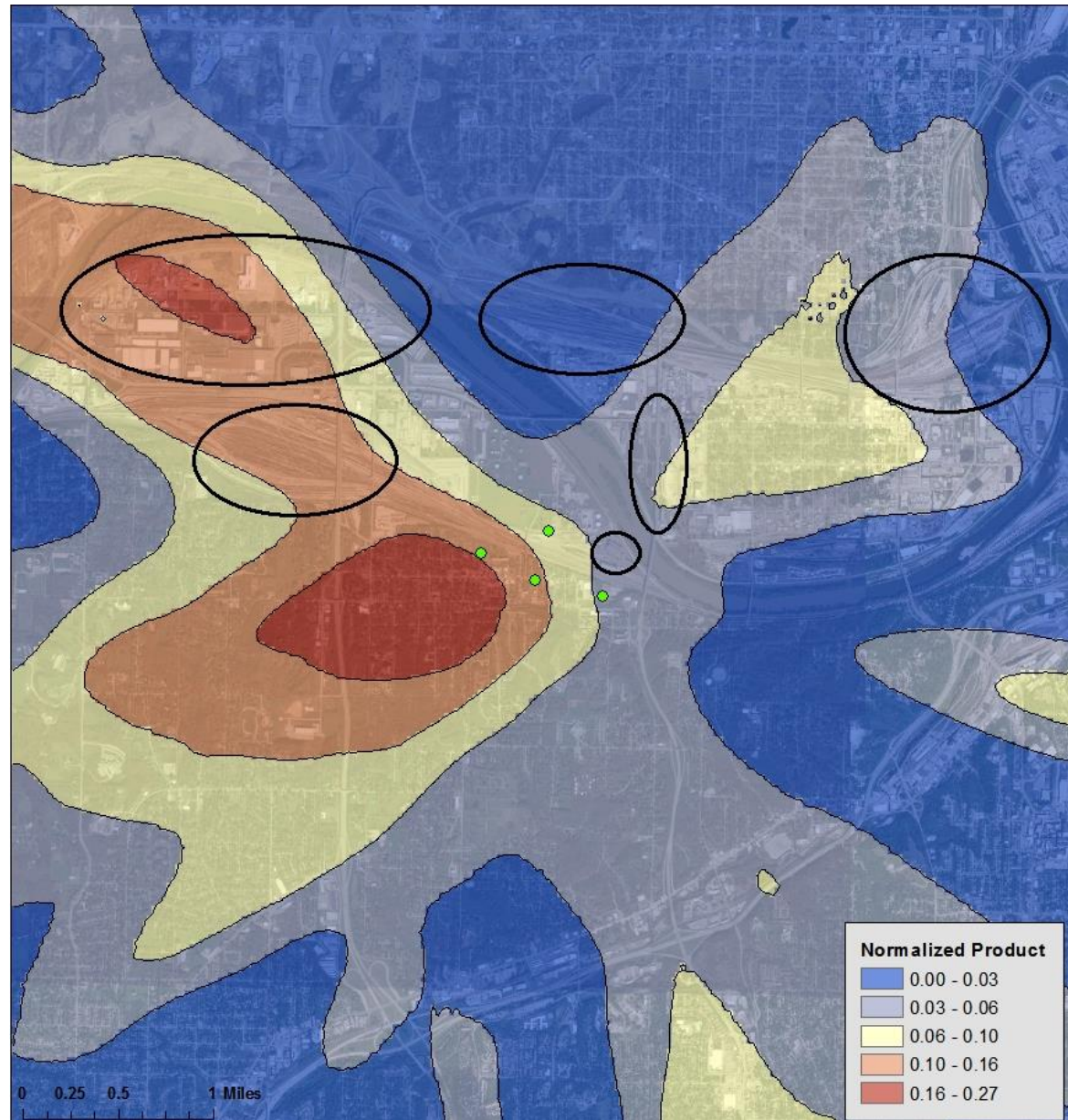


Police Station



NTA Results – Combined

- Combine NTA data by normalizing individual results and multiplying together
- Each site is impacted by similar regions with variable magnitude
- Results indicate that local $PM_{2.5}$ contributions come from a mix of sources, many nearby each other



Summary

- KC-TRAQS is a long term study to examine impacts of local sources of air pollution in Kansas City, KS
- Sensor Pods deployed in the area allow for advanced data analysis techniques
- NTA analysis shows that the local area is impacted by multiple nearby sectors, many with multiple types of sources

Next Steps

- Complete measurement campaign
- Collocate sensor pods with reference quality monitors
- Refine and apply quality assurance and data screening procedures
- Examine data from other sensors and pollutants
 - How do Met One E-BAM PM_{2.5} measurements compare to Alphasense OPC-N2?
 - How similar are black carbon trends to PM_{2.5} and what does this imply about local sources?
 - Do mobile monitoring and citizen science data agree with fixed sites?

Questions?



Disclaimer: This document has been reviewed in accordance with U.S. Environmental Protection Agency policy and approved for publication. Mention of trade names, products, or services does not convey, and should not be interpreted as conveying, official U.S. Environmental Protection Agency (EPA) approval, endorsement, or recommendation.